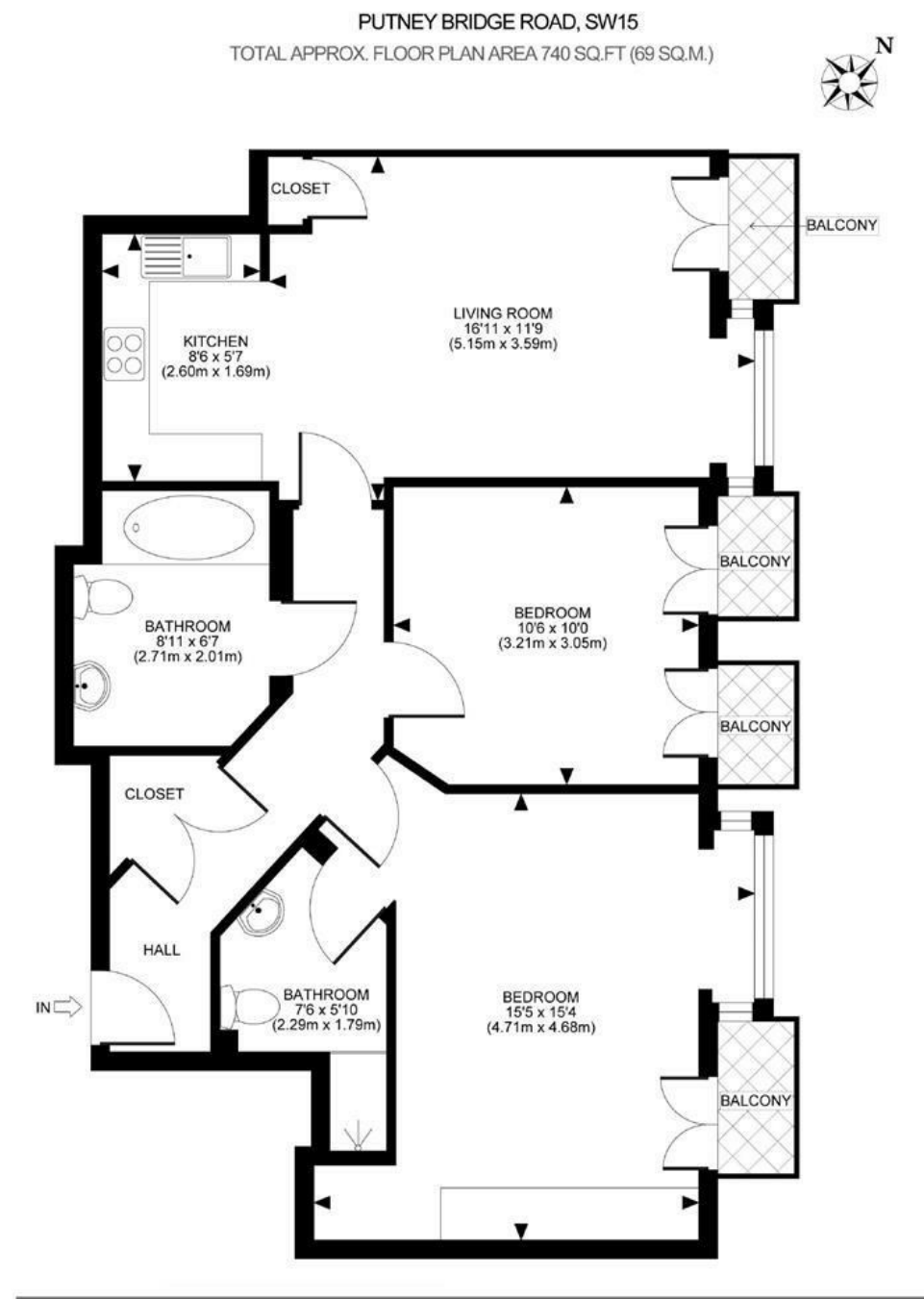


## Putney Bridge Road, Putney, SW18

A beautifully presented and well located two double bedroom flat on the first floor of this popular residential development overlooking Wandsworth Park. Offered on a furnished basis and benefiting from gated underground parking and four private balconies overlooking Wandsworth Park, the accommodation comprises an entrance hallway, bright reception room with access to one of the balconies, a brand new, semi open plan kitchen, the principal bedroom with en suite shower room and a further balcony, a second double bedroom with access to two private balconies and a family bathroom. This stunning flat is ideally located within easy access of Putney High Street, the train and underground as well as all the amenities Wandsworth has to offer. Available now.



All measurements walls, doors, windows, fittings and their appliances, their size and locations are shown conventionally and are approximate only and cannot be regarded as being a representation either by the seller or his agent nor zentuvo  
www.zentuvo.co.uk

**DISCLAIMER**•These particulars are intended to give a fair and substantially correct overall description for the guidance of intending purchasers and do not constitute an offer or part of a contract. Prospective purchasers and/or lessees ought to seek their own professional advice.  
•All descriptions, dimensions, areas, references to condition and necessary permissions for use and occupation and other details are given in good faith and are believed to be correct, but any intending purchasers should not rely on them as statements or representations of fact, but must satisfy themselves by inspection or otherwise as to the correctness of each of them.  
•All measurements are approximate.



- BRIGHT RECEPTION ROOM
- TWO DOUBLE BEDROOMS
- FOUR BALCONIES
- GATED UNDERGROUND PARKING
- EPC C
- SEMI OPEN PLAN KITCHEN
- TWO BATH/SHOWER ROOMS
- STUNNING VIEWS
- GREAT LOCATION
- COUNCIL TAX BAND E

Per Calendar Month  
**£2,400 Per Calendar Month**



